

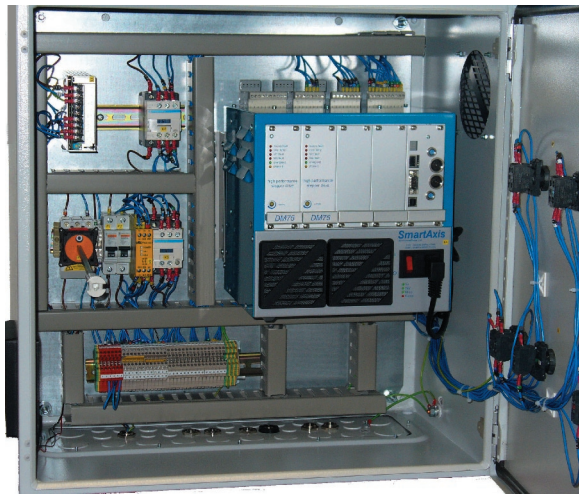


smartdrive
DRIVING MOTION FURTHER

Custom Control Panels

SmartDrive offer custom built control cabinets for each motion application and full project management services. Here are a few recent examples:

Multi-axis stepper control system with full dual channel Emergency Stop interface and door mounted controls. 600x600x350mm



Single axis stepper motor control system with door mounted controls and 7" touchscreen HMI. 600x380x210mm



Custom rugged data entry and operation terminal in stainless steel. 300x200x80mm

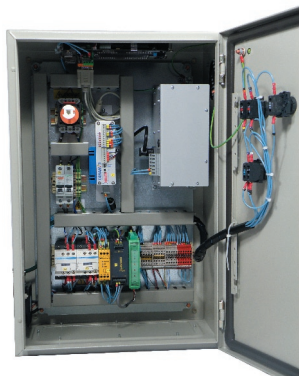
Single axis stepper drive control system incorporating full dual channel Emergency Stop interface. 600x380x210mm



Two axis servo control system incorporating door mounted controls and chiller unit in a stainless steel enclosure. 760x760x300mm



Single axis stepper drive control system incorporating full dual channel Emergency Stop interface and a 7" HMI mounted on the top surface. 600x400x250mm



Portable servo control system with two-part connector for motors and IO. 400x400x250mm



Please call us to discuss your specific panel or total project management needs

SmartDrive Ltd, 8 Colne Road, Earith, Huntingdon, Cambridgeshire, PE28 3PX
Tel: +44 (0) 1487 843663, Fax: +44 (0) 1487 843661, www.smartdrive.co.uk, info@smartdrive.co.uk